

ROSEN AVIATION

Premium cabin electronics for the aviation industry



PRODUCT CATALOG

2019

TABLE OF CONTENTS

Page 3:	Smart Displays
Page 5:	Media Input Panel
Page 6:	Touch Control unit
Page 7:	Tablet Holders
Page 8:	Plug In Displays
Page 9:	Bulkhead Displays
Page 13:	Modular Design
Page 15:	22" RDM
Page 16:	24" RDM
Page 17:	32" RDM
Page 18:	55" RDM
Page 19:	Blu-Ray Player
Page 20:	Moving Map
Page 21:	Distribution Products

888.668.4955 www.rosenaviation.com

SIMPLE

FLEXIBLE

CAPABLE

SCALABLE

AFFORDABLE

SMART DISPLAYS

Our NEW feature-rich line of slim Smart Displays are capable of streaming synchronized video content to displays and customer's carry-on devices with no perceived audio latency. All Smart Displays come standard with an embedded 2D map and ARINC 429 interface allowing customers to select and display flight data, such as distance and time to destination, altitude, speed, etc. Contact Rosen today to learn more about this exciting new line of Smart Displays and other RosenView® Access products.

10.1"

Bulkhead Display

Model Shown: SDM100-001

Key Specifications:

- 9.89" (w) x 6.84" (h) x 1.10" (d)
- Weight – 2.5 lbs
- Backlight – LED
- Resolution – 1280 x 800
- Operating power – 28VDC
- Inputs – 3G HD-SDI, Composite
- ARINC input
- Analog Stereo Audio Out
- PCAP Touchscreen control
- DO-160 Section 21 Category M compliant
- 2D Moving Map



15.6"

Bulkhead Display

Model Shown: SDM156-001

Key Specifications:

- 14.78" (w) x 8.96" (h) x 1.17" (d)
- Weight – 5.5 lbs
- Backlight – LED
- Resolution – 1920 x 1080
- Operating power – 28VDC
- Inputs – 3G HD-SDI, Composite
- ARINC input
- Analog Stereo Audio Out
- DO-160 Section 21 Category M compliant
- 2D Moving Map



888.668.4955

www.rosenaviation.com

SMART DISPLAYS

Our NEW feature-rich line of slim Smart Displays are capable of streaming synchronized video content to displays and customer's carry-on devices with no perceived audio latency. All Smart Displays come standard with an embedded 2D map and ARINC 429 interface allowing customers to select and display flight data, such as distance and time to destination, altitude, speed, etc. Contact Rosen today to learn more about this exciting new line of Smart Displays and other RosenView® Access products.

18.5"

Bulkhead Display

Model Shown: SDM185-001

Key Specifications:

- 17.4" (w) x 10.48" (h) x 1.19" (d)
- Weight – 6.5 lbs
- Backlight – LED
- Resolution – 1920 x 1080
- Operating power – 28VDC
- Inputs – 3G HD-SDI, Composite
- ARINC input
- Analog Stereo Audio Out
- DO-160 Section 21 Category M compliant
- 2D Moving Map

22"

Bulkhead Display

Model Shown: SDM220-001

Key Specifications:

- 19.98" (w) x 11.97" (h) x 1.15" (d)
- Weight – 7.2 lbs
- Backlight – LED
- Resolution – 1920 x 1080
- Operating power – 28VDC
- Inputs – 3G HD-SDI, Composite
- ARINC input
- Analog Stereo Audio Out
- DO-160 Section 21 Category M compliant
- 2D Moving Map



888.668.4955

www.rosenaviation.com

MEDIA INPUT PANEL

Rosen's Media Input Panel (MIP) serves as a gateway, providing passengers with options to view and share content. To watch content, simply plug your HDMI enabled device and cable into the HDMI input port, or view content from a USB device plugged into the USB input port. When not being used to view content, the USB provides 1.5A charging for PED's or other carry-on devices. Note: When using the Media Input Panel with one of Rosen's non-"smart monitors" the USB port will act as a charger only.

Media Input Panel

Model Shown: MIP100-002

Key Specifications:

- 5.364 (w) x 1.38" (h) x 2.14" (d)
- Weight – .45 lbs
- HDMI
- Dual 3G SDI Outputs
- USB Input data & charging (when connected to smart monitors)
- USB charging only (when connected to legacy monitors)



888.668.4955 www.rosenaviation.com

TOUCH CONTROL UNIT

View HD video and flight information on our 4.7" sunlight readable touchscreen controller. The Touch Control Unit (TCU) provides system control via Ethernet or RS232. With four built-in relays, it can be configured to control cabin functions such as reading lights, table lights, window shades, or other cabin functions and provides analog audio output to a headphone jack.

Touch Control Unit Model Shown: CTS047-001 Key Specifications:

- 3.28" (w) x 5.55" (h) x 1.28" (d)
- Weight – .8 lbs
- 4.7" Touchscreen
- Resolution 720x1280
- Sunlight Readable
- Edge to Edge Glass
- 4 Relays (1.5 Amps Max)
- Ethernet & RS232 Control
- Analog Stereo Audio Out
- Has no fans, requires no external cooling



888.668.4955 www.rosenaviation.com

TABLET HOLDER



Does your aircraft cabin have Rosen’s plug-in displays? If so, then you are ready for Rosen’s NEW plug-in Tablet Holder. Designed to drop into the existing Micro D and Pogo pin bases, there are no additional expenses for costly interior modifications or wiring changes to support the USB charging feature.

Designed to meet the high quality you’ve come to expect from Rosen’s products, the soft rubber pads will protect and retain your device, while the adjustable cradle will provide hands-free operation and charging of your carry on devices such as mobile phones, e-readers and tablets.

Four configurations are available: short or tall plug heights and either Micro D-Sub or Pogo Pin mating connectors (see model chart below).

Rosen Base Part	Tablet Number		Connector Type
0100-002	ACC100-060 Short Plug	ACC100-047 Tall Plug	Micro D-Sub
0100-004	ACC100-060 Short Plug	ACC100-047 Tall Plug	Micro D-Sub
0100-005	ACC100-060 Short Plug	ACC100-047 Tall Plug	Micro D-Sub
0100-015	ACC100-015 Short Plug	ACC100-037 Tall Plug	Pogo Pin
0100-042	ACC100-015 Short Plug	ACC100-037 Tall Plug	Pogo Pin
0100-043	ACC100-015 Short Plug	ACC100-037 Tall Plug	Pogo Pin

The part numbers listed represent the most popular base configurations. If you don't see your base part number listed, please contact Rosen customer service at 1-888-668-4955 for assistance.

888.668.4955 www.rosenaviation.com

PLUG IN DISPLAYS

Utilizing the latest LED display technology, our 9" and 12" personal displays are thinner, lighter and require less power than older display technologies. 9" model is available in HD and composite input options.

9" HD & Composite

Personal Plug-In Display

Model Shown: 9000-310

Key Specifications:

- 9.04" (w) x 6.06" (h) x 1.18" (d)
- Weight – 3lbs
- Backlight – LED
- Resolution – 1280 x 760
- Operating power – 28VDC
- HD Inputs – 3G HD-SDI
- Composite inputs - NTSC
- DO-160 Section 21 Category M compliant

12" HD

Personal Plug-In Display

Model Shown: 1200-337

Key Specifications:

- 11.48" (w) x 7.70" (h) x 1.6" (d)
- Weight – 4.6 lbs
- Backlight – LED
- Resolution – 1280 x 800
- Operating power – 28VDC
- Inputs – 3G HD-SDI
- DO-160 Section 21 Category M compliant



888.668.4955

www.rosenaviation.com

BULKHEAD DISPLAYS

All-In-One Configurations

Enjoy your favorite movies with a crisp, clear picture on Rosen's LED bulkhead displays.

10.6" SlimLine

Model Shown: 1060-001

Key Specifications:

- 10.25" (w) x 6.56" (h) x 1.09" (d)
- Weight – 2.44 lbs
- Backlight – LED
- Resolution – 1280 x 768
- Operating power – 28VDC
- Inputs – 1 3G HD-SDI, 1 VGA, 1 composite
- DO-160 Section 21 Category M compliant

15.6" SlimLine

Model Shown: 1560-001

Key Specifications:

- 14.7" (w) x 9.13" (h) x 0.97" (d)
- Weight – 3.24 lbs
- Backlight – LED
- Resolution – 1920 x 1080
- Operating power – 28VDC
- Inputs – 1 3G HD-SDI, 1 VGA, 1 composite
- DO-160 Section 21 Category H compliant



888.668.4955 www.rosenaviation.com

BULKHEAD DISPLAYS

All-In-One Configurations

Enjoy your favorite movies with a crisp, clear picture on Rosen's LED bulkhead displays.

17.5" SlimLine

Model Shown: 1702-003

Key Specifications:

- 16.81" (w) x 10.97" (h) x 1.6" (d)
- Weight – 7.4 lbs
- Backlight – LED
- Resolution – 1280 x 768
- Operating power – 28VDC
- Inputs – 2 3G HD-SDI, 2 HDMI/DVI
2 VGA, 2 composite
Accepts up to 1080P
- DO-160 Section 21 Category M compliant



888.668.4955 www.rosenaviation.com

BULKHEAD DISPLAYS

Remote Monitor Electronics Box

Capable of driving display modules from 19" to 55", the Remote Monitor Electronics Box does all the heavy lifting. We have moved the components that add weight, thickness and require thermal management away from the display module. This provides the potential for larger display installations than those traditionally installed on bulkheads. Additionally, there is no extra thermal management required in the bulkhead.

Remote Monitor Electronics Box

Model Number: 0700-107

Key Specifications:

- 11.72" (w) 1.98" (h) 7.02" (w)
- Weight 2.89 lbs
- Video Inputs – 2 3G HD-SDI,
2 HDMI/DVI, 2 VGA, 2 Composite
- Operating power – 28VDC
- Video formats 480i/576i through 1080P



888.668.4955 www.rosenaviation.com

BULKHEAD DISPLAYS

Smart Remote Monitor Electronics Box

Rosen's Remote Electronic Displays are now compatible with Rockwell Collins Venue and CES Cabin Management/IFE systems. Using a Smart Remote Monitor Electronic Box (SRMEB) you can now view Rockwell Collins Airshow moving map and watch movies on demand in full high-definition 1080p on Rosen's industry leading ultra-thin displays ranging in sizes from 19" to 55".

Smart Remote Monitor Electronics Box

Model Number: 0700-150

Key Specifications:

- 11.72" (w) 1.98" (h) 7.02" (w)
- Weight 4.0 lbs
- Video Inputs – 1 3G HD-SDI, 1 HDMI/DVI, 1 3G HD-SDI Output
- Operating power – 28VDC
- Video formats 480i/576i through 1080P



888.668.4955 www.rosenaviation.com

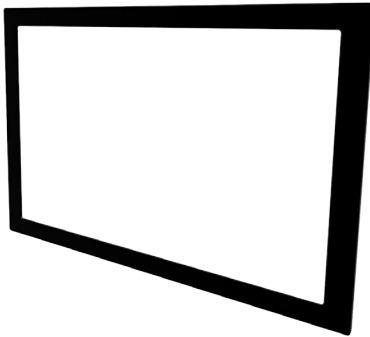
BULKHEAD DISPLAYS

Modular Design

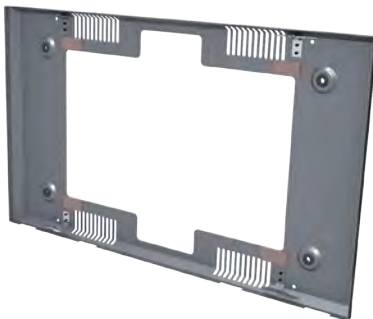
Remote Display Module



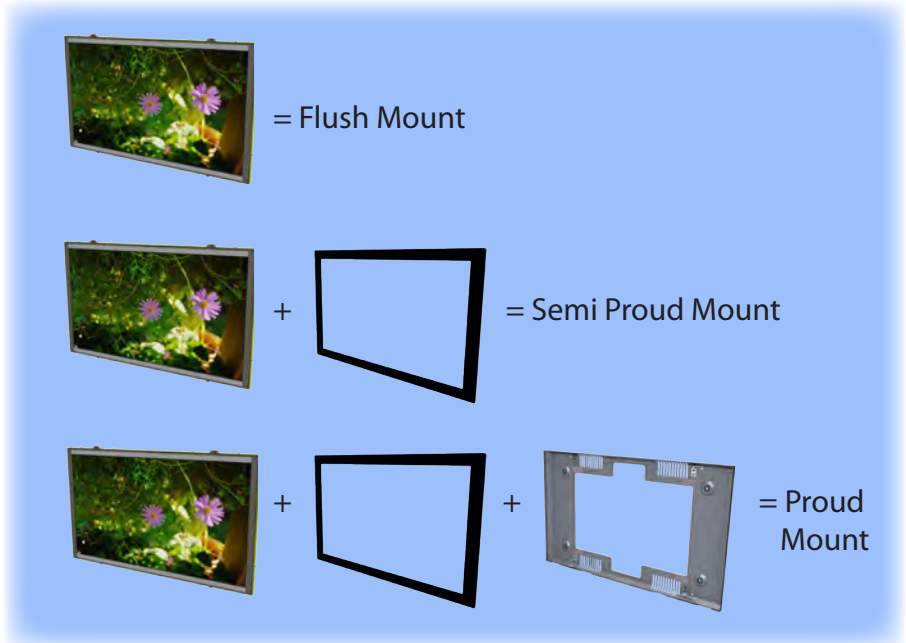
Optional Bezel Assembly



Optional Cosmetic Back Plate



By removing the electronics from the display assembly, we can offer larger displays in extremely thin and light assemblies, providing a significant increase in installation options. The remote monitor electronics box is a common part number to all remote electronic displays and can be mounted up to 50 feet from the display.



888.668.4955 www.rosenaviation.com

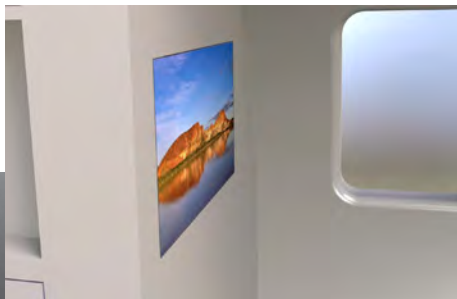
BULKHEAD DISPLAYS

Modular Design



Our Remote electronics monitors are not only thinner and lighter, but have optional decorative front bezels and cosmetic back plates to provide an entirely new range of contemporary cabin designs and installation options. These new bulkhead displays provide for three distinct mounting options - traditional "flush mount", partial flush mount (or semi-proud mount), or mounted directly on the bulkhead (proud mount). Additionally, the decorative front bezel can be custom finished to match any aircraft cabin. See mounting option pictures below.

Traditional
Flush Mount



Semi Proud Mount
with front bezel



Proud Mount
with bezel and back plate



Display sizes available with remote electronics box: 19" through 55"

888.668.4955 www.rosenaviation.com

BULKHEAD DISPLAYS

Remote Electronics

Ultra thin designs with remote electronics box that can be placed up to 50' from the display. Expand both your mechanical and cosmetic installation options.

22" SlimLine

Remote Electronics LCD

Model Shown: 2201-100

Key Specifications:

- 20.09" (w) x 12.31" (h) x 0.9" (d)
- Weight – 6.5lbs
- Backlight – LED
- Resolution – 1920 x 1080
- Optional cosmetic bezel
- Optional cosmetic back
- Accepts up to 1080P
- DO-160 Section 21 Category M compliant



888.668.4955 www.rosenaviation.com

BULKHEAD DISPLAYS

Remote Electronics

Ultra thin designs with remote electronics assembly that can be placed up to 50' from the display. Expand both your mechanical and cosmetic installation options.

24" SlimLine

Remote Electronics LCD

Model Shown: 2401-100

Key Specifications:

- 22.48" (w) x 13.55" (h) x 0.9" (d)
- Weight – 7.7 lbs
- Backlight – LED
- Resolution – 1920 x 1080
- Optional cosmetic bezel
- Optional cosmetic back
- Accepts up to 1080P
- DO-160 Section 21 Category M compliant



888.668.4955 www.rosenaviation.com

BULKHEAD DISPLAYS

Remote Electronics

Ultra thin designs with remote electronics box that can be placed up to 50' from the display. Expand both your mechanical and cosmetic installation options.

32" SlimLine

Remote Electronics LCD
Model Shown: 3201-100

Key Specifications:

- 29.9" (w) x 17.75" (h) x 1.24" (d)
- Weight – 18.8 lbs
- Backlight LED
- Resolution – 1920 x 1080
- Optional cosmetic bezel
- Optional cosmetic back
- Accepts up to 1080P
- DO-160 Section 21 Category M compliant



888.668.4955 www.rosenaviation.com

BULKHEAD DISPLAYS

Remote Electronics

Yet another ultra thin monitor to our bulkhead product line. The 55" HD Wide Screen LED backlit 1080P monitor will amaze you with its crisp picture and vibrant colors.

55" SlimLine

Remote Electronics LCD
Model Shown: 5501-100

Key Specifications:

- 50.07 (w) x 29.43 (h) x 1.24 (d)
- Weight –57.1lbs
- Backlight – LED
- Resolution – 1920 x 1080
- Accepts up to 1080P
- Inputs into remote electronics box
- DO-160 Section 21 Category M compliant



888.668.4955 www.rosenaviation.com

BLU-RAY DVD PLAYERS

Your HD source solution – rugged slot load players with flexible mounting options and broad CMS integration capabilities.

Single Blu-ray Player

Model Shown: 0602-002

Key Specifications:

- 7.0" (w) x 3.0" (h) x 7.1" (d)
- Weight – 2.9 lbs
- Operating power – 28VDC
- Accepts high definition and standard definition discs as well as DVD-R, CD-DA, MP3, CD, SVCD
- Outputs - two 3G HD-SDI, one HDMI/DVI, two composite, one component
- 7.1 audio S/PDIF audio and 2 channel (stereo) with volume control
- Control via front panel, IR remote RS232, or RS485
- DO-160 Section 21 Category M compliant



888.668.4955 www.rosenaviation.com

MOVING MAP

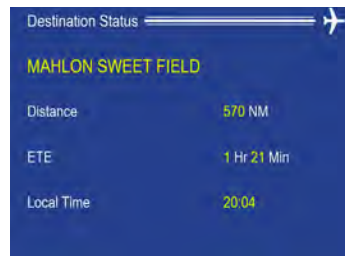
Provides passengers with a feature rich moving map and cabin briefing system with multiple views - combined satellite imagery / roadway / current flight information view, simulated aircraft instrument gauge view and destination summary view.

RosenView MX

Model Shown: 0603-003

Key Specifications:

- 7.7" (w) x 3.1" (h) x 7.7" (d)
- Weight – 3.5 lbs
- Operating power - 28VDC
- Video outputs - VGA output, dual composite outputs
- Control outputs – IR, RS232 or RS485
- Data inputs – ARINC 429 or GPS NMEA



Features –

- Worldwide satellite imagery
- Multiple zoom levels
- Current flight information display
- Flight path with history trail
- Combined satellite imagery and roadway data view
- Aircraft instrument gauge view
- Destination summary view
- Supports 20 languages
- Supports up to 16 user-supplied audio/video cabin briefings
- Web based user configuration tool
- User configuration options include:
 - Splash screen
 - Aircraft symbol
 - Displayed zoom levels
 - Display language
 - Colors – labels, data, background



888.668.4955

www.rosenaviation.com

DISTRIBUTION PRODUCTS

Headphone Distribution Amplifier



Model Shown: 0700-001

Key Specifications:

- 7.7" (w) x 1.4" (h) x 5" (d)
- Weight – 0.85 lbs
- Operating power – 28VDC
- 3 stereo analog audio inputs
- 1 mono microphone input
- 8 stereo outputs

Video Distribution Amplifier

Model Shown: 0700-006

Key Specifications:

- 10.4" (w) x 1.9" (h) x 4.4" (d)
- Weight – 1.6 lbs
- Operating power – 28VDC
- 4 Composite inputs
- 8 Composite outputs
- 2 RGB Inputs
- 3 RGB Outputs



Audio Control Jack

Model Shown: 0700-003

Key Specifications:

- 1.84 (w) x 2.95" (h) x 1.20" (d)
- Weight – 0.25 lbs
- Complete volume control
- Accepts standard 3.5mm (1/8 in) headphone jack
- Switch between available audio sources



RUGGEDIZED AIRCRAFT AUDIO AND VIDEO DISTRIBUTION EQUIPMENT

888.668.4955

www.rosenaviation.com